



**Heritage / VistaGrande
Stock Flush-Glazed Exterior Doors**



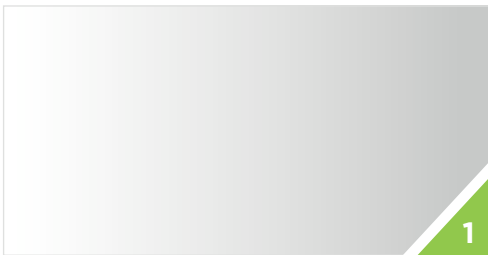
Flush-Glazed Exterior Fiberglass Doors

Embody the purity of Craftsman design without the maintenance of wood. Each customizable door is seamlessly designed with architecturally correct panels and flush, factory-sealed glass that invites in more light while keeping your home comfortable.



Winslow® Flush-Glazed Glass

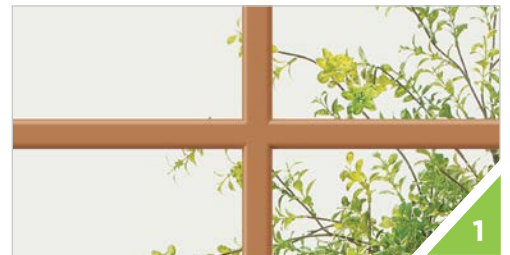
PRIVACY RATING **1** ————— **10**
Least Obscure ————— Most Obscure



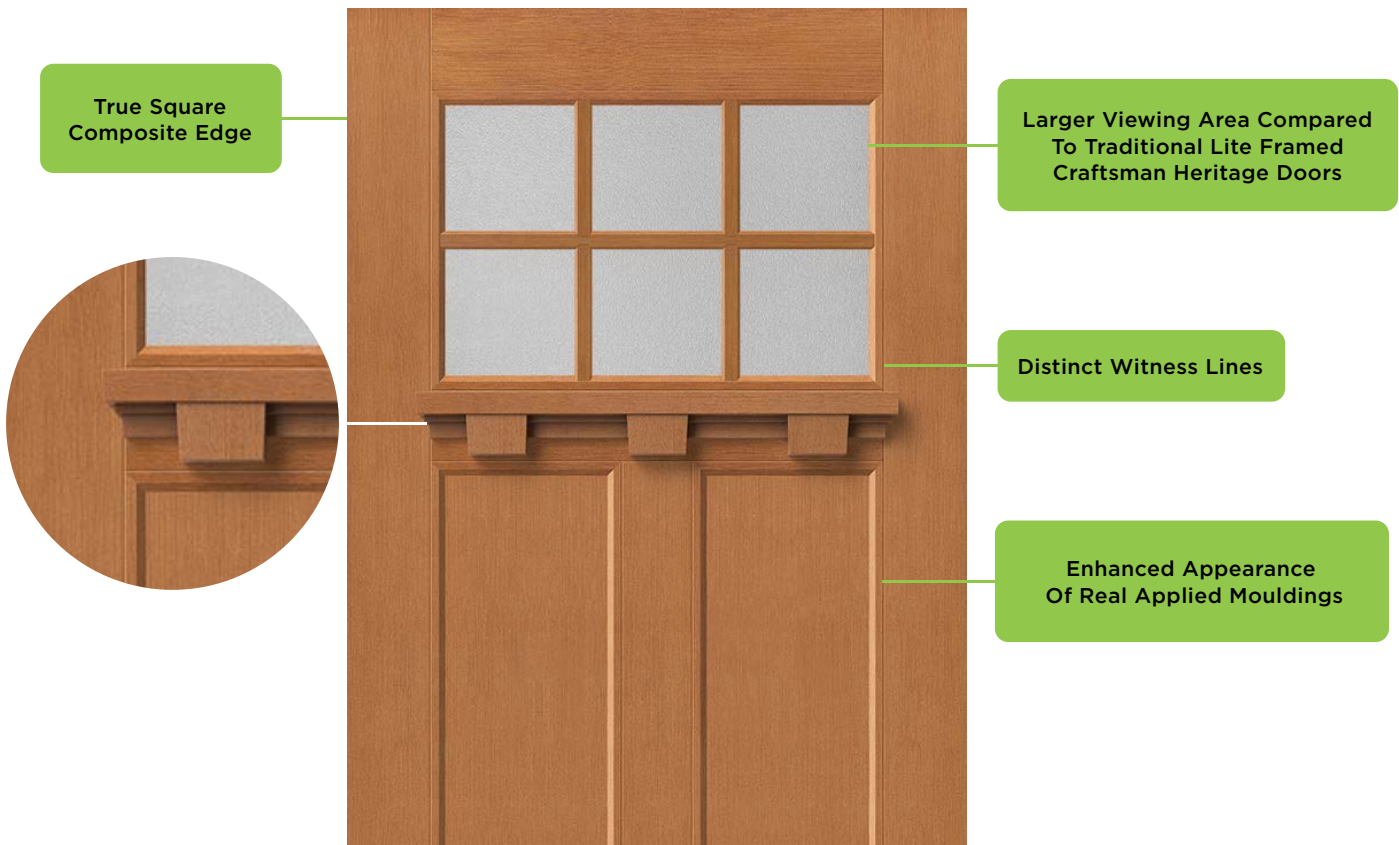
Clear Low-E / 010



Clear Low-E / 010



Clear Low-E / 010



- True Square Composite Edge** (points to the window frame edge)
- Larger Viewing Area Compared To Traditional Lite Framed Craftsman Heritage Doors** (points to the window area)
- Distinct Witness Lines** (points to the horizontal line in the window)
- Enhanced Appearance Of Real Applied Mouldings** (points to the decorative lintel)

Lincoln Park



Logan



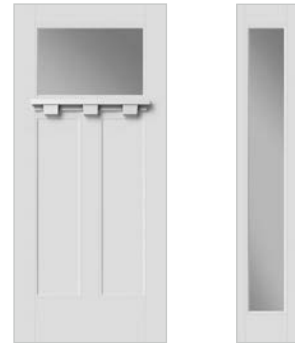
Winslow



Winslow Flush Glazed
Clear Low-E Glass



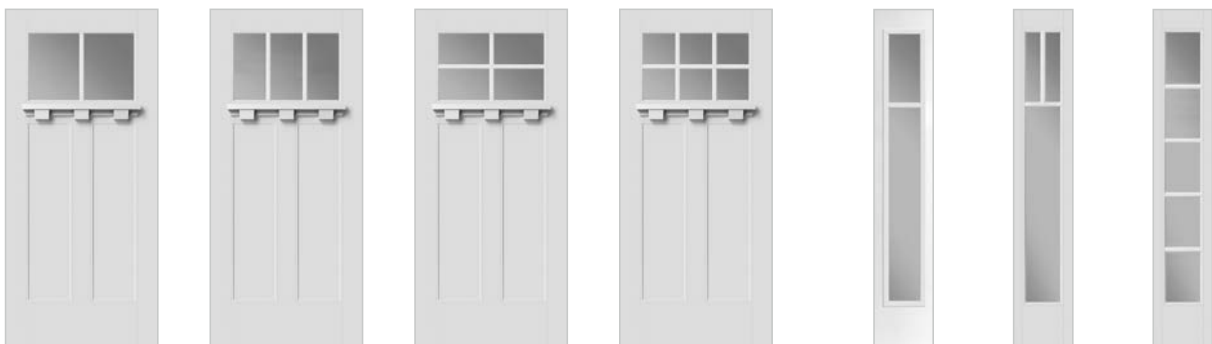
Winslow Flush Glazed
Clear Low-E Glass



Winslow. Flush Glazed Fir Textured Fiberglass / Applied Simulated Divided Lites



Winslow. Flush Glazed Smooth Textured Fiberglass / Applied Simulated Divided Lites



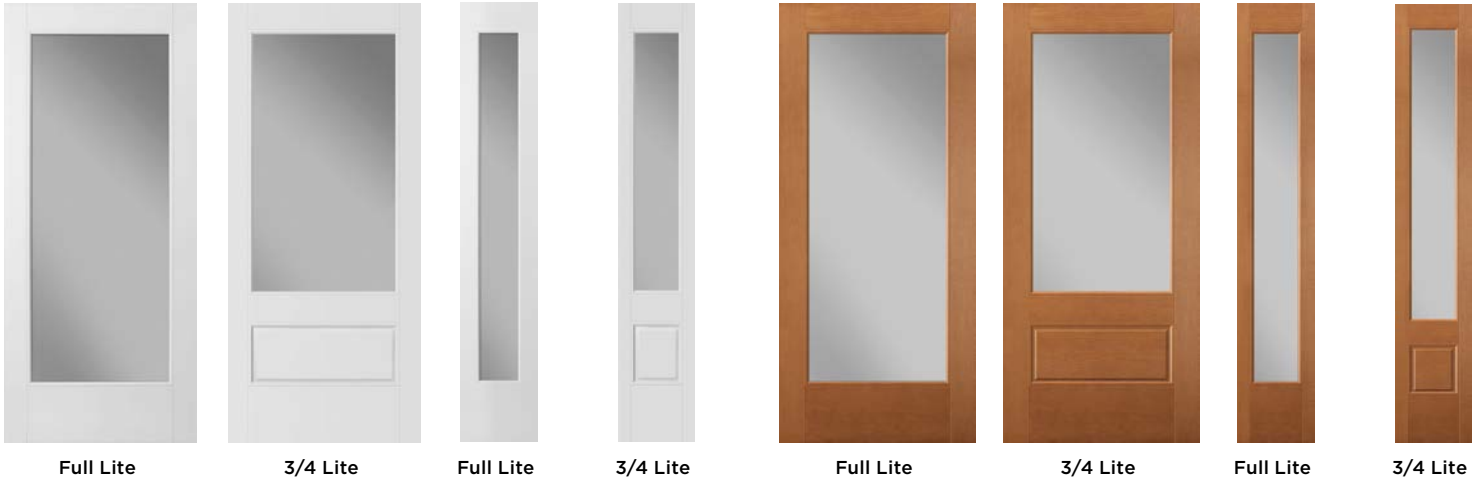
Stock 2'8" & 3'0" x 6'8" SIDELITE STOCK 1'0" & 1'2" X 6'8"

Low-E Glass | All Doors Shown With Optional Dentil Shelf

More Available - Visit Masonite.com

VistaGrande®

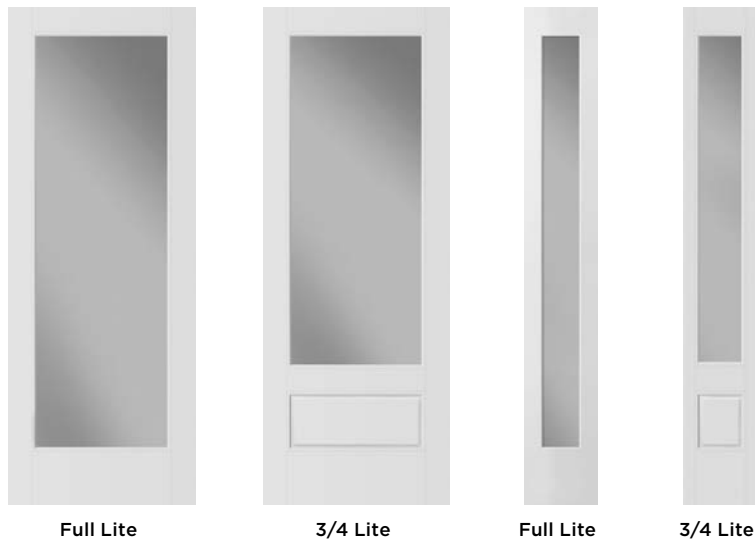
VistaGrande® Smooth Flush-Glazed Doors / Clear Glass Low-E Glass - 6'8"



VistaGrande® Smooth Flush-Glazed Doors / Raise, Lower & Tilt Mini Blinds With Clear Low-E Glass - 6'8"



VistaGrande® Smooth Flush-Glazed Doors / Clear Glass Low-E Glass - 8'0"



VistaGrande® SDL's



VistaGrande® Fir Textured Flush-Glazed Doors / Applied SDL's On Low-E Glass



4 Lite

10 Lite

1 Panel
9 Lite Prairie

3 Lite
3-1/2" Bars

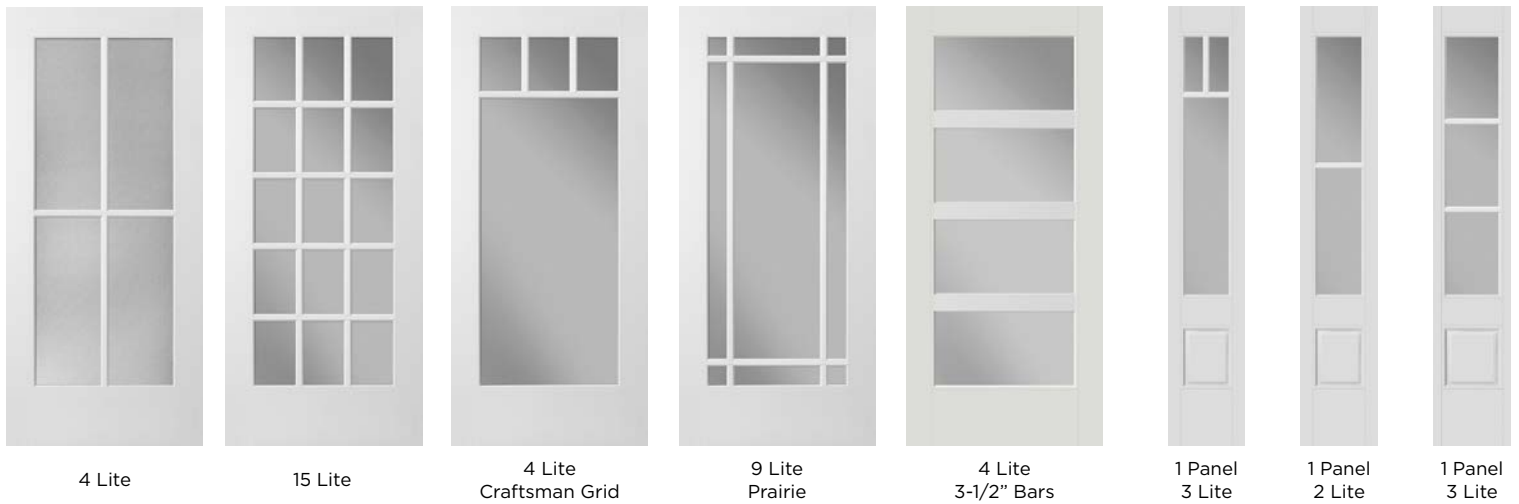
1 Panel
6 Lite

1 Panel
3 Lite

1 Panel
2 Lite

1 Panel
3 Lite

VistaGrande® Flush-Glazed Doors / Applied SDL's On Low-E Glass



4 Lite

15 Lite

4 Lite
Craftsman Grid

9 Lite
Prairie

4 Lite
3-1/2" Bars

1 Panel
3 Lite

1 Panel
2 Lite

1 Panel
3 Lite

Prefinishing

Premium Paint



Stains For Fiberglass



Exterior Door Stock Hardware

F Series Plymouth Single Cylinder Handlesets



Latitude Lever with Century Trim



B60 Single Cylinder Deadbolts



F51N Plymouth Key Lock Knobs



F51N Accent Levers



Built With Industry-Leading Components

It's More Than Just Choosing A Door...

So much happens beyond just opening and closing a door; Horner combines state of the art Endura technology with the trusted dependability and beauty of Masonite doors for a quality door system you can count on.



DOORS & GLASS



True Square Composite Edge

Fiberglass doors designed with the square edge details of a real wood door.*



Polyurethane Core

Insulates 5x better than real wood for exceptional heat and cold resistance.



Insulated Glass & Long-Lasting Warm-Edge Spacers

Reduces energy costs and prevents condensation.



Fiberglass Skin

Resists warping, rotting, rusting and denting. The composite edge creates a complete barrier surrounding the wood within the door system.



FRAME & COMPONENTS



PE650. Weatherstripping & Simple Solution. Corner Pad Patented Designs

Seals out air and water.



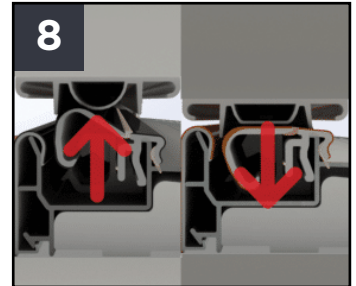
PanoLock

A one-of-a-kind multi-point lock that works with off-the-shelf hardware at an affordable price.



Framesaver. Door Frame

Never absorbs water, rot, cracks or wraps; backed by the industry's only fully transferable warranty.



Z-Articulating Cap Sill™ (Z-AC)

Automatically adjusts to form a watertight seal, even against imperfect openings.

* Note: The image shown is of a door cutout, no wood is exposed on the final product.



HORNERMILLWORK.COM



HORNER MILLWORK SHOWROOMS:

1255 Grand Army Hwy | SOMERSET, MA 02726 | 800.543.5403
21H Turnpike Road | SOUTHBORO, MA 01745 | 508.481.9774
55 Corporate Park Drive | PEMBROKE, MA 02359 | 781.826.7770

HORNER COMMERCIAL SALES OFFICES:

1255B Grand Army Hwy | SOMERSET, MA 02726 | 800.275.9855